

RESTAURANT FOR LEASE



3915 Henderson Boulevard

South Tampa, FL 33629

DEMOGRAPHICS

	1 mile	3 mile	5 mile
Population	12,566	85,755	183,171
Average HH Income	\$82,273	\$53,389	\$46,832
Median Age	40.0	39.7	38.6

PROJECT/MARKET HIGHLIGHTS:

- 3,952 s.f. ground floor; 877 s.f. second floor
- Full liquor
- 36 parking spaces
- Cross easement for additional parking adjacent property
- Excellent visibility
- Large dedicated pylon sign
- Heart of affluent South Tampa near Dale Mabry intersection



FOR MORE INFORMATION:

Kalyn K. Brandewie

kalyn@floridaretailpartners.com

813-251-3333

2202 S. MacDill Avenue | Tampa, Florida 33629 | 813-251-3334 FAX

www.floridaretailpartners.com



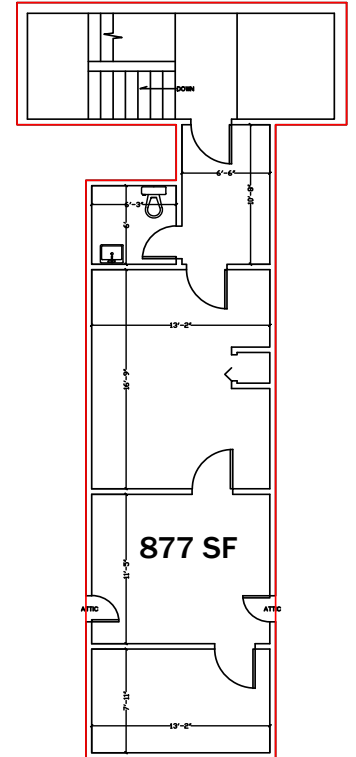
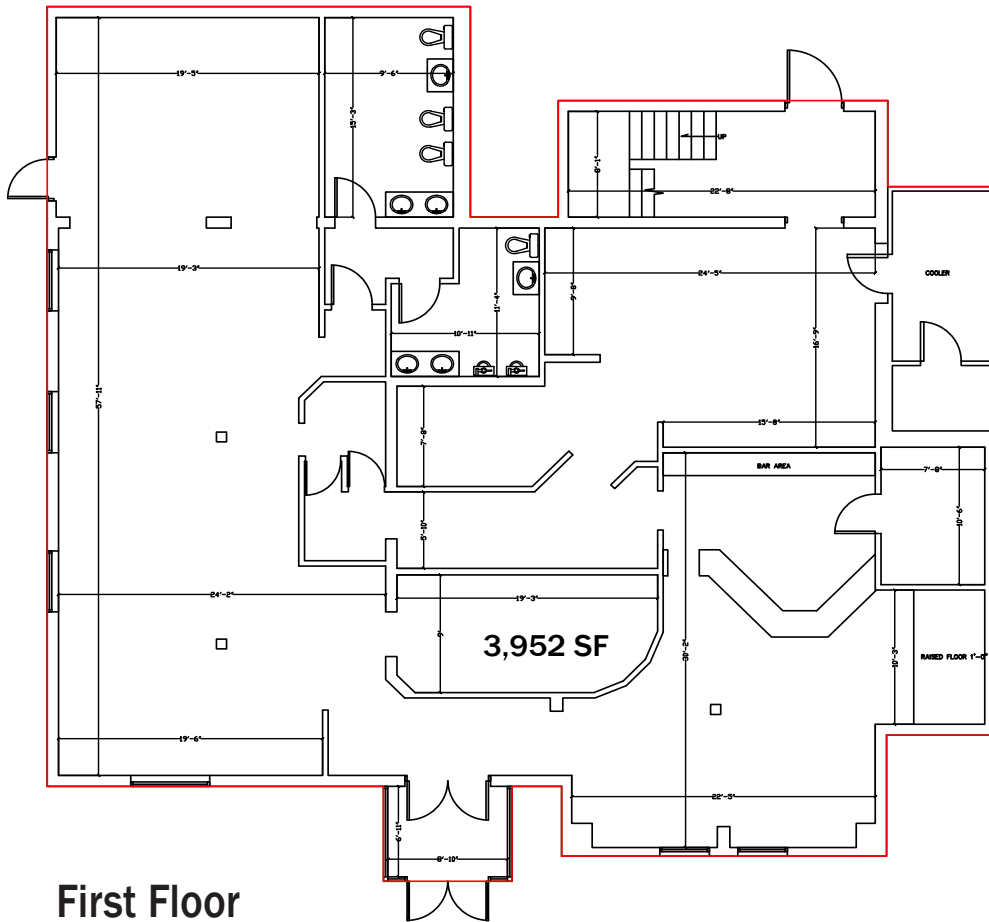
EXTENSIVE EXPERIENCE.
EXCLUSIVELY RETAIL.

3915 Henderson Blvd.

South Tampa, FL 33629

FOR LEASING INFORMATION CONTACT:

Kalyn K. Brandewie
813-251-3333



2202 S. MacDill Avenue • Tampa, Florida 33629 • 813-251-3333

www.floridaretailpartners.com